

Layers

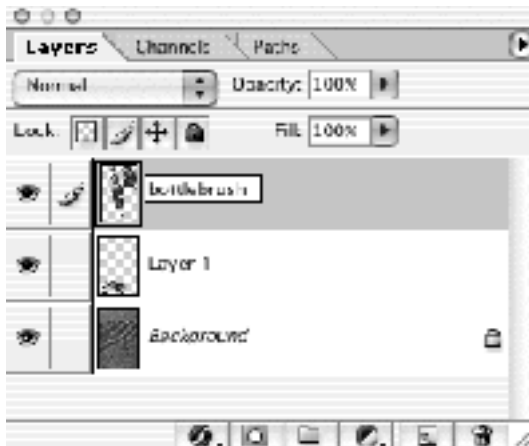
Managing Layers

1. Open "IMG0018.jpg" and save it as "layersTest.psd"
2. Open "bike.pic" and select and copy the bike then paste it onto "layersTest"
3. Open "bottlebrush.tif", select the bottlebrush, copy it and paste it also onto "layersTest.psd"



You now have a multi layer document. Make sure you can see the layers palette.

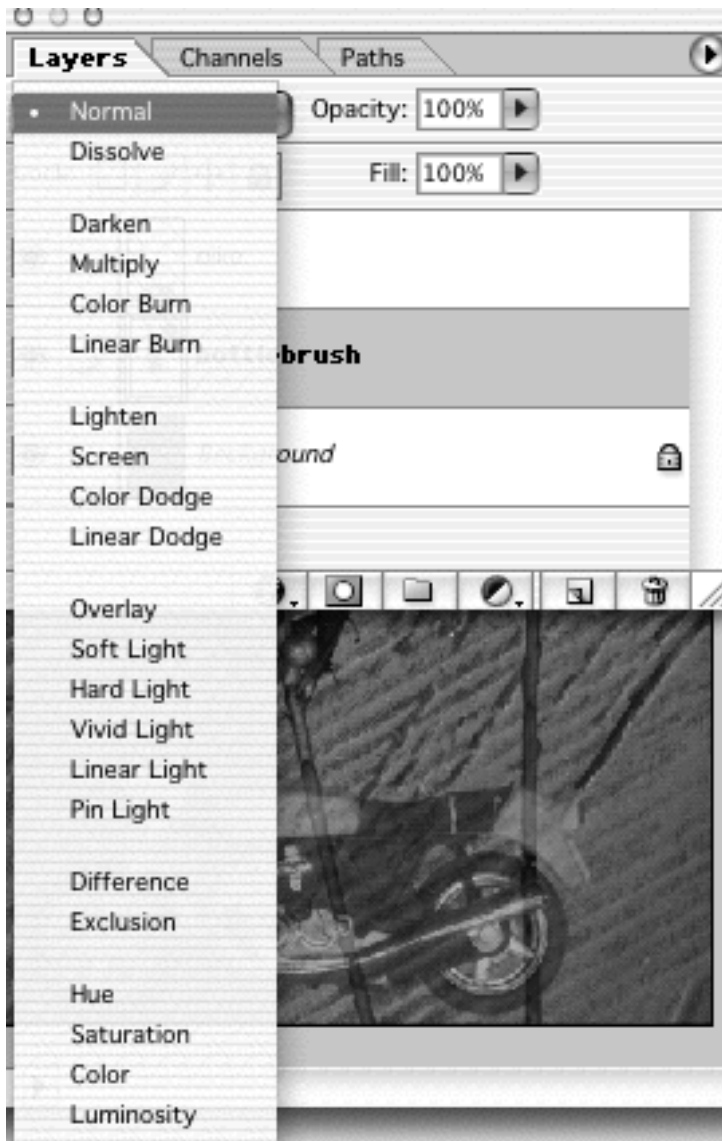
4. Position the bike and bottlebrush so that they overlap.
The bottle brush is in front of the bike as its layer is higher in the layers palette.
5. Drag the bottlebrush layer downwards until it is under the bike layer.
This changes the stacking order of the layers.



6. Double click on the layer name of the bike layer ("Layer 1") and change its name to "bike". Similarly, change the name of the bottle brush layer to "bottlebrush".

7. Change the Opacity of the bike layer to 50% to make it semi-transparent.

8. Select the bottlebrush layer and try some of the different Blending modes. Eg; *Difference* makes a negative version of the bottle brush as compared to the background image.



9. With the bottlebrush layer selected, click the link icon (beside the eye icon) next to the bike layer.



This groups or links the two layers, so that if you move one layer, the other moves as well. Try dragging it around with the layer move tool.

10. With the bottlebrush layer selected, click the padlock icon at the top of the layers palette to prevent further changes to that layer.



Try dragging the layer. Try using a drawing tool on the layer.

Duplicating Layers

1. Set the bike layer's opacity back to 100%
2. Duplicate the bike layer by dragging its layer onto the duplicate icon at the bottom edge of the palette (like a page with a folded corner)

3. Name the duplicate layer "bike blur"
4. Apply a Motion Blur with a distance of 100 or more pixels.
5. Move the bike blur layer downward in the stacking order and position it under the other bike
6. Move the blurred bike so that it looks like a motion trail.
7. Link the bike and bike blur layers.

Adjustment Layers

You can modify the colour balance of all layers at one time using an adjustment layer.

1. Select the top layer
2. From the Layer Menu choose New Adjustment Layer -> Levels
3. Name it Levels Change
4. Increase the contrast of the image by lightening the highlights, using the Levels dialogue box that shows up.

The adjustment layer contains no image data, only colour correction information. It will affect any layers that are underneath it. Try moving the bike to be above it in the layers palette - the levels change is no longer affecting the bike image.



To modify the settings of the adjustment layer, double click on its levels icon. The icon showing beside the adjustment layer (grey rectangle with a white circle in it) indicates a layer mask.

Layer Masks

Masks allow parts of a layer to be made invisible or semi-transparent.

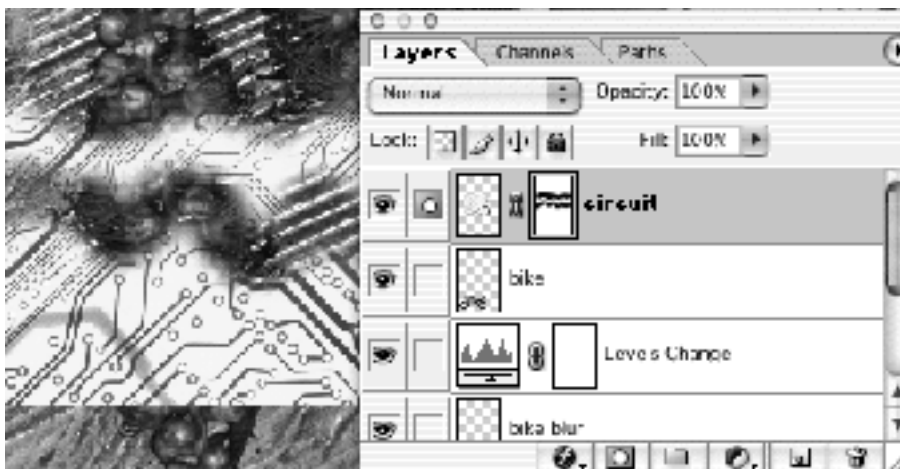
1. Open "circuit4.jpg"
2. Select All and copy
3. Paste it onto "layersTest.psd", name its layer "circuit"
4. Move the circuit layer up so that it is not affected by the adjustment layer.
5. From the Layer Menu choose Add Layer Mask -> Reveal All

The icon of the layer changes to indicate that a layer mask is in place.

6. Click on the white rectangle icon in the circuit layer to select the mask.

A black outline appears around the mask when it is active. This indicates that whatever work we do will be affecting the mask, not the imagery in the layer.

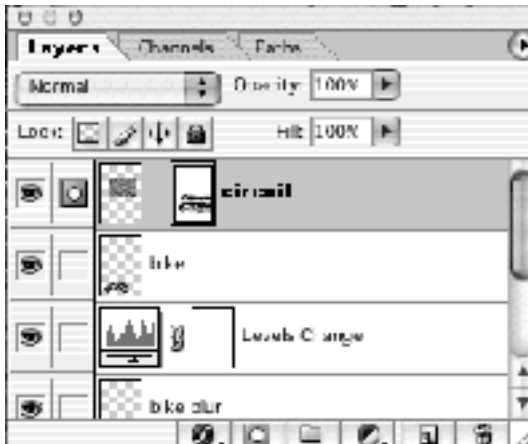
7. Choose the paintbrush tool with a large brush, choose black as the colour and draw a wavy line across the circuit graphic.



Where ever you paint, the layer becomes invisible. The mask icon updates and shows the black line you have been drawing.

8. Try painting with grey. This will partially hide the circuit graphic.
9. To go back to working on the circuit graphic rather than the mask, click back on the thumbnail image of the circuit imagery in the layer.

10. Make a Hue change to the circuit layer. This should be changing the circuit image.
11. Click on the chain icon between the circuit thumbnail and the mask icon. This unlinks the imagery and its mask.



12. Try moving the circuit image around. The mask through which it is seen stays still.
13. Click on the mask icon then try moving it round. Now the circuit image stays still and the mask moves.
14. Re-link the image and its mask by clicking between the two.
15. From the layer Menu choose Remove Layer Mask -> Apply.

This removes any image information that isn't visible and discards the mask.

Paste Into

1. Using the Type mask tool type in the word "BIKE" in large bold letters and click the tick icon in the options area to make the selection.
2. Open "antelope.jpg" Select All and Copy
3. Bring "layersTest.psd" to the fore again and from the Edit menu choose Paste Into

This creates an unlinked layer mask in the shape of the text selection and applies it to the pasted graphic.

4. Modify the layer mask further by applying a filter to it Eg; Filter -> Distort ->

Ripple.

5. Apply the mask to the layer and save the file.